



PSA Firmware Update

Instruction

Commercial in Confidence

Revision history




Date	Rev	By	DCN	Comments	CHKD	CHKD Date	Ext. APPD	Ext. APPD Ref	Ext. APPD Date
04/11/2016	00	DG	2016-0104	Original Issue	AGW	04/11/2016	-	-	-
-	-	-	-	-	-	-	-	-	-
-	-	-	-	-	-	-	-	-	-
-	-	-	-	-	-	-	-	-	-
-	-	-	-	-	-	-	-	-	-

Table of Contents

1	INTRODUCTION	5
2	METHOD 1. FRESH INSTALL	6
	2.1 Software Uninstallation.....	6
	2.2 Software Installation	6
3	METHOD 2. *.PSA REPLACEMENT	7
4	FIRMWARE UPDATE	8

Warnings, cautions and notes

Warnings and Cautions highlight potential hazards and safety risks. Notes provide supplementary information that is not hazard-related.

-  **WARNING:** THIS INDICATES A POTENTIALLY HAZARDOUS SITUATION THAT, IF NOT AVOIDED, COULD RESULT IN DEATH OR SERIOUS INJURY.
-  **CAUTION:** THIS INDICATES A POTENTIALLY HAZARDOUS SITUATION THAT, IF NOT AVOIDED, COULD RESULT IN EQUIPMENT DAMAGE OR LOSS OF DATA.
-  **NOTE:** THIS INDICATES INFORMATION THAT IS CONSIDERED IMPORTANT BUT IS NOT HAZARD RELATED.

1 INTRODUCTION

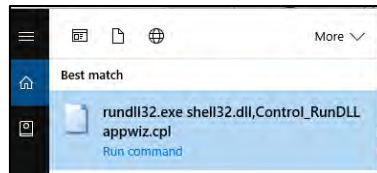
This document describes the firmware update procedure for the Analox Sup-Aspida using the Analox Aspida – Configuration Software tool

2 METHOD 1. FRESH INSTALL

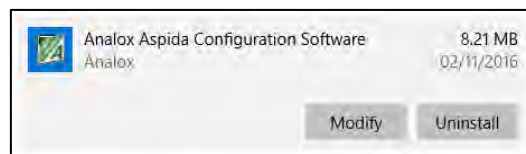
2.1 Software Uninstallation

Prior to installing the Analox Aspida – Configuration Software tool it will be necessary to uninstall any previous versions

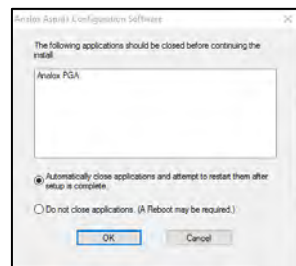
- [1] Open the Add/Remove program (Run: **rundll32.exe shell32.dll,Control_RunDLL appwiz.cpl**)



- [2] **Highlight the Analox Aspida Configuration Software and select 'Uninstall'**



- [3] Follow the onscreen prompts

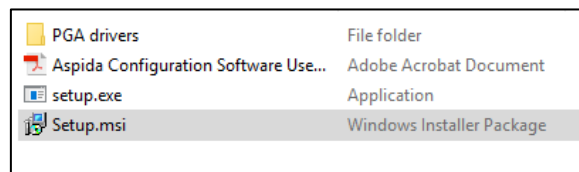


- [4] Once complete, close the Add/ Remove program window

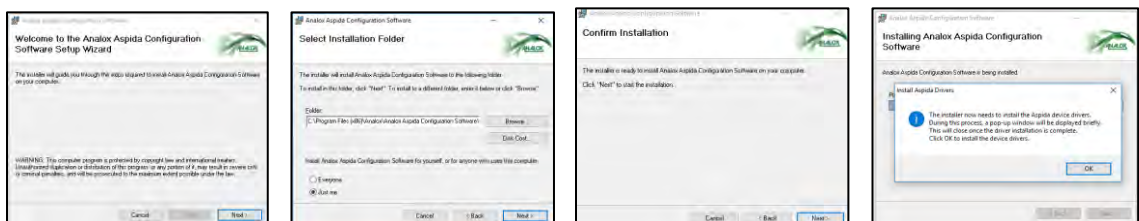
2.2 Software Installation

- [1] Navigate to <https://www.analoxsensortechnology.com/aspida-laboratory.html>, select and download the Aspida PC tool, alternatively select this [link](#) and download the aspida PC tool

- [2] **Once downloaded, open the Aspida PC Tool. Zip file and run the 'Setup.msi' file**



- [3] Follow the onscreen prompts



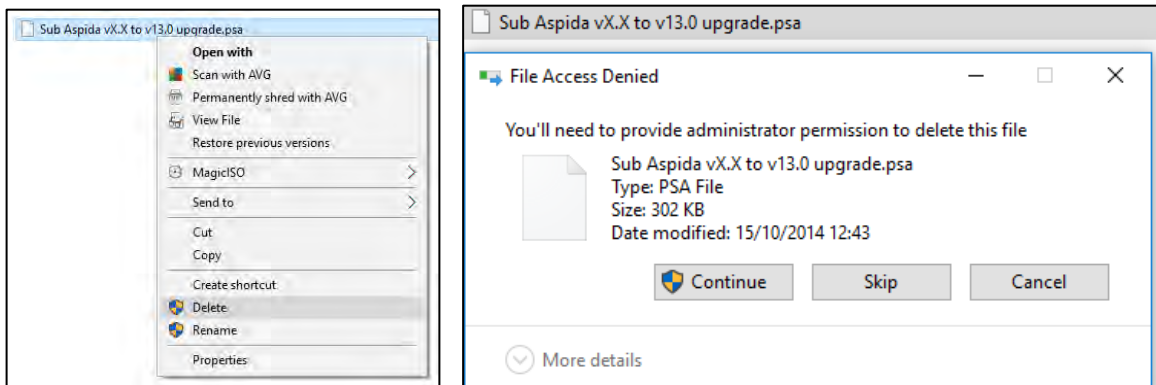
- [4] Follow the FIRMWARE UPDATE step

3 METHOD 2. *.PSA REPLACEMENT

[1] Navigate to the Analox Aspida Configuration Software Upgrade folder on your PC

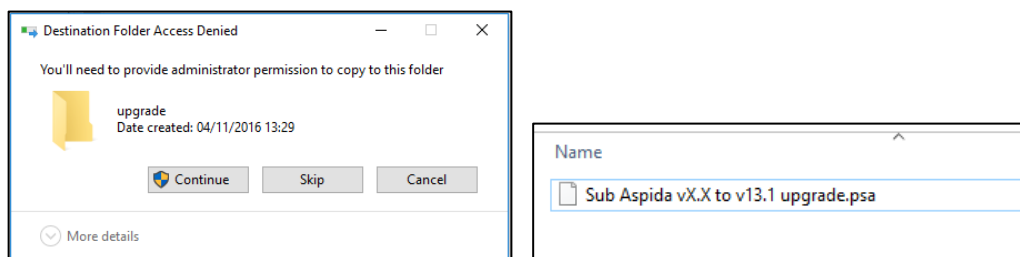
Note. This is usually C:\Program Files (x86)\Analox\Analox Aspida Configuration Software\upgrade but your system may vary

[2] Delete the current Sub Aspida psa file



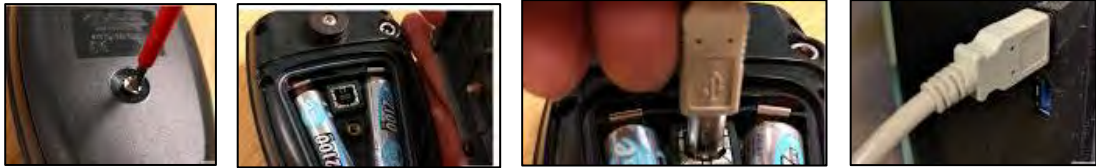
[3] Navigate to <https://www.analoxsensortechnology.com/aspida-laboratory.html> and download the Aspida firmware file

[4] Copy the newly downloaded Sub Aspida psa file to the Analox Aspida Configuration Software Upgrade folder

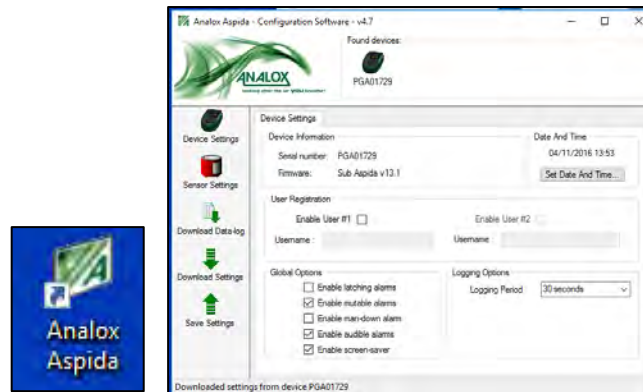


4 FIRMWARE UPDATE

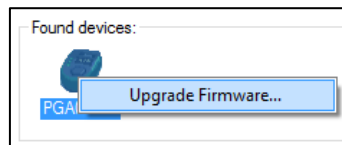
- [1] Connect your Sub Aspida to the PC Port via the supplied usb cable



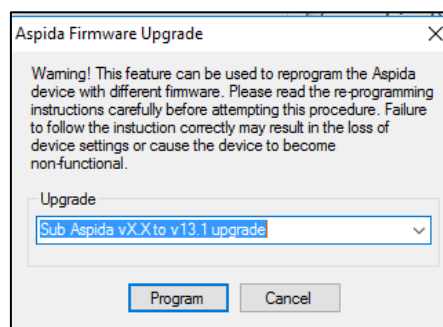
- [2] Open the Analox Aspida PC tool



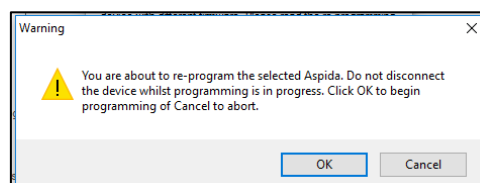
- [3] Your device will display under the **'Found devices' heading, right click on the device icon and select 'Upgrade Firmware'**



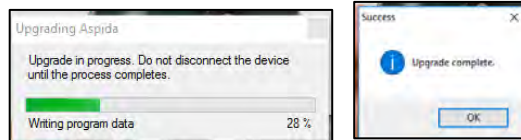
- [4] In the window that opens, select the firmware from the drop down list and **click 'Program'**



- [5] Select OK in the next window



- [6] The device will automatically update and confirm when complete



- [7] Disconnect the USB cable and power cycle the device (power down and back up again)
- [8] Congratulations, your device has now been updated to the most recent firmware version